

Made To Order Gates - Order Form

Infill with our WPC boards or a material of your choice

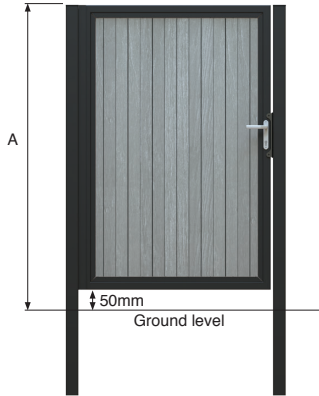


We are pleased to offer steel framed gates with steel posts that can incorporate a choice of infill boards from our WPC range, or the option of just the gate frames for you to clad in a material of your choice. These gates can be tailored to your exact requirements and seamlessly integrated with one of our many fencing systems, offering a total perimeter solution.

Our gates are made using quality gate hardware with the option of concrete-in or wall mounted steel posts and frames, that are galvanised and powder coated afterwards to black RAL 9005 as standard or another RAL colour of your choice if specified.

Choose Your Gate Type & Posts

Single Leaf Gates



Driveway Gates



A (height) Width
 Width includes posts
 Width between posts
 Left Hung Right Hung
 Viewed from external side
 Concrete-In Posts Wall mounted Posts
 RAL Colour If Required

A (height) Width
 Width includes posts
 Width between posts
 Concrete-In Posts Wall mounted Posts
 RAL Colour If Required

Choose The Orientation Of WPC Infill

Vertical (max height A 1.92m) Horizontal (max leaf width A 1.89m)

Choose Your Infill

WPC Boards

Charcoal
Code: 72FPS18SCH



Light Grey
Code: 72FPS18SLG



Teak
Code: 72FPS18ST



Walnut
Code: 72FPS18SW



Anthracite
Code: 72FPS18A



Jet Black
Code: 72FPS18JB*



*Available in August 2026.

Supplied As Standard

Rear Hung 180° Gates



Drop Bars



Slimline Locks



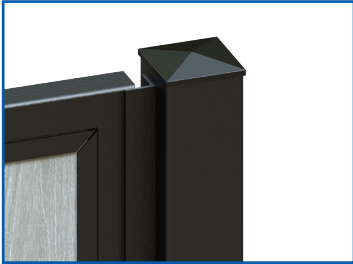
Slam Plate



Do You Require Any Of The Following?

Cloaking Strip

Intercom



Please Supply Drawing Here If Required

Blank area for drawing.

Additional Notes

Blank lines for additional notes.

Customer Information

Customer account no. (if known): _____
Name: _____
Company: _____
Address: _____ Postcode: _____
Tel: _____
Email: _____

For Office Use Only

Order no: _____
Date: _____

We use quality brands from the gate hardware & automation market to build our gates



Whilst every effort has been made to ensure the accuracy of the information supplied. F.H.Brundle cannot be held responsible for any errors or omissions. This product must only be employed for its original intended use. Any other use is wrong and potentially dangerous. Installation must be carried out in full compliance with current regulations. F.H.Brundle cannot be held liable for any damages resulting from wrongful, erroneous or negligent use.

Jun 2026